

Warrior MCV assembly instructions

BASIC VERSION

GLUE base (A) to underside of hull (B) ensuring that the horizontal rear of the base is flush with the rear of the hull and that the front of the base slopes up towards the front of the hull. Take care that the base is positioned exactly mid way between the hull sides, so that when the tracks are positioned they do not extend beyond the hull.

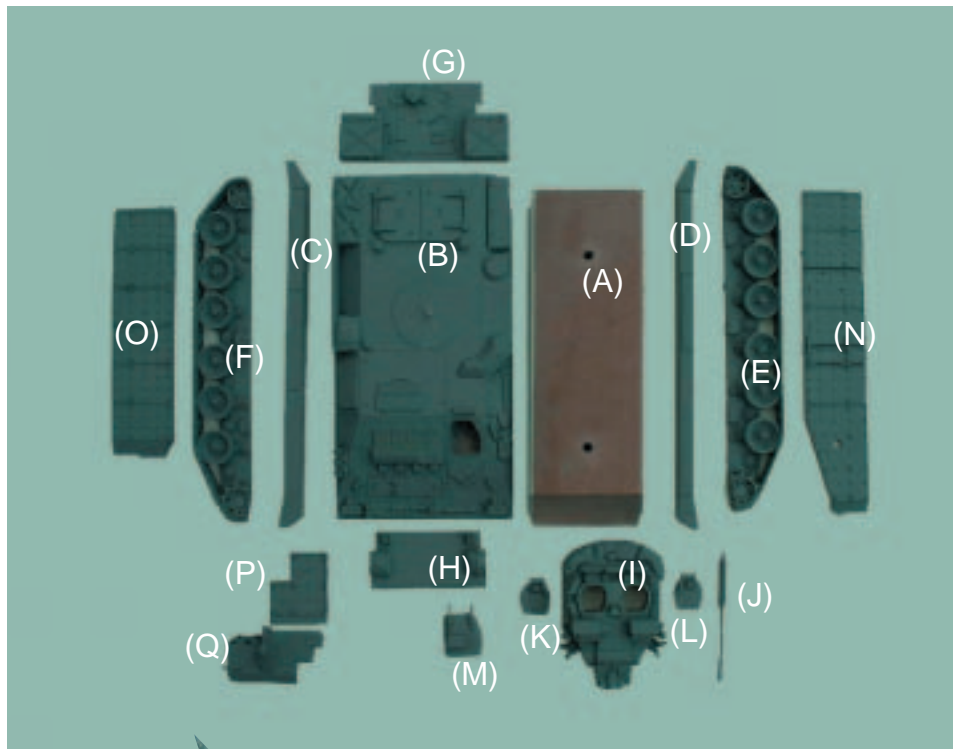
Position and glue side skirts (C) and (D) to underside of hull on either side of the base. Ensure that the rectangular shape marked on skirt (D) lines up with the small hatch on the right side of the hull (see inset picture of finished model).

Glue tracks (E) and (F) into position on each side of the base under the side skirts. The driving sprockets should be at the front.

Glue front and back plates (H) and (G) into position. These are shaped and can only fit one way.

In underside of turret (I) drill 1.6mm hole to accommodate peg on hull top. The hole should be positioned central to each side between the two hatches and approx. 14mm from the front of the turret base. If the turret is not positioned correctly you may find that it will not rotate through 360 degrees. If that happens, you will need to sand down the corners of the turret base until it does. If the hull peg is lost, drill a 1.6mm hole in that spot and use a short pin as a peg.

Drill 1.6mm hole into front of gun mantle on turret to accommodate the Rarden cannon (J) which must be inserted with the open part of the barrel facing up. The drilling must be done very carefully to avoid splitting the base of the mantle. However, if it does split the cannon may be glued into place after using a small amount of modelling wax or filler underneath to position it.



front of (N) is level with the lights. The armour tops should be flush with the top of the hull.

Glue extra armour plates (P) and (Q) so that they form a V shape which fits over the front of the hull. To make a better fit, you will have to remove the right-hand bracket on front plate (H) and sand down the axe featured on the front of the hull. When positioned, if there is a noticeable gap between the hull and the armour when viewed from the side it can be filled with modelling wax before painting.

Fix turret hatches (K) and (L) into place. They may be glued into a fixed position or left to open and close as necessary.

Fix driver's hatch (M) into place on the hull front. If glued open, first ensure that it will not impede the turret cannon.

UP-ARMoured VERSION

Glue extra armour (N) and (O) into position. The rear of the armour should be positioned flush with rear of the hull so that the



■ Use a cyanoacrylate super glue or epoxy glue to assemble ■ To ensure best results, wash in warm, soapy water before painting with either enamel or acrylic paints ■ If any part of the model becomes distorted, it can be straightened after briefly immersing in hot water ■ If sanding, work in a ventilated room and use a dust mask ■ This model contains small parts and is not suitable for young children